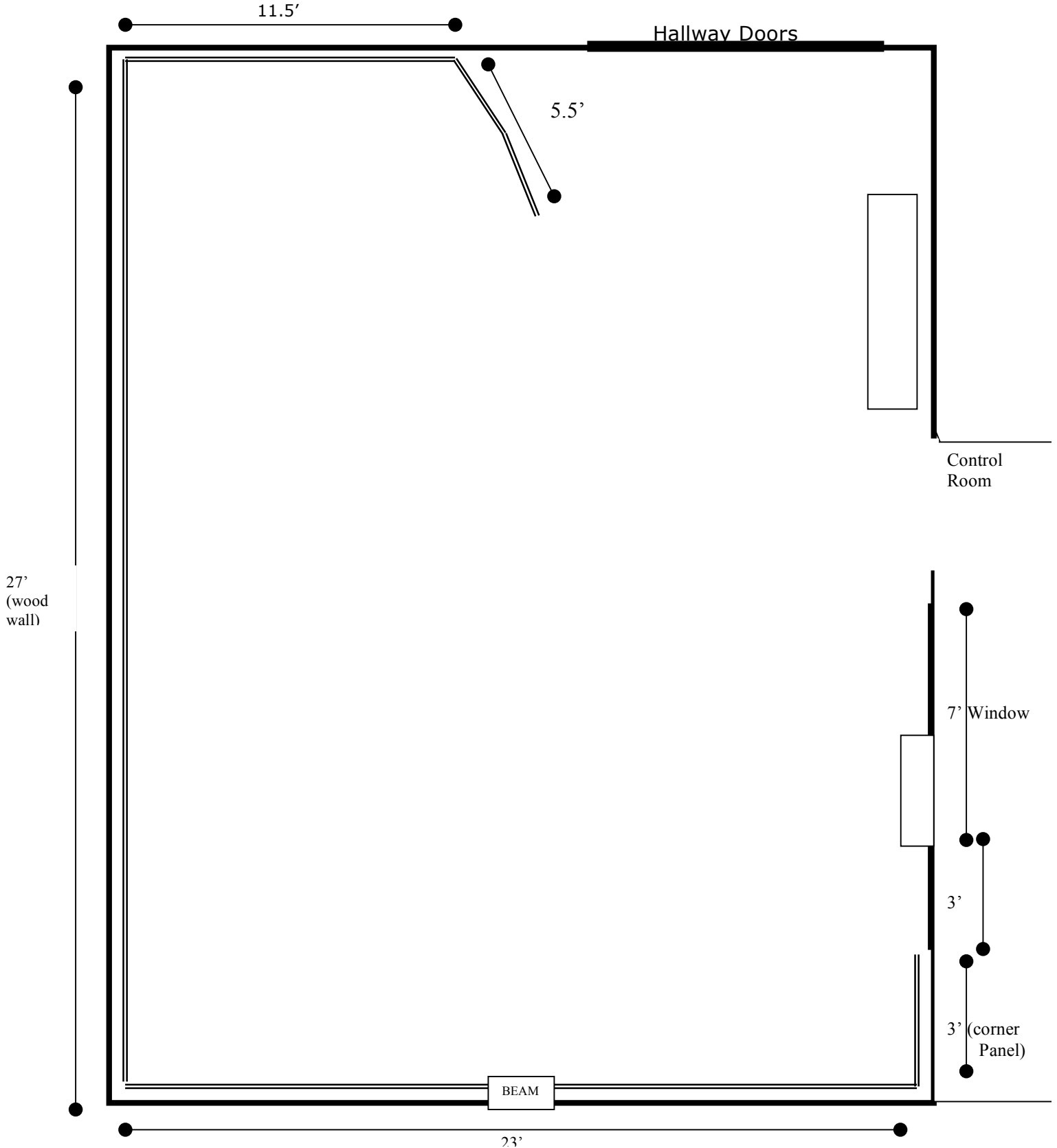


Set Design & Lighting Plan

Please draw out the set you will need. Work with the Studio Manager to design your set.
Complete this 5 days prior to your scheduled day. (FYI...risers are 4 foot square.)

Studio A Floor Plan:



Set Design & Lighting Plan

Please design the lighting you will need with the Studio Manager. The numbered boxes refer to the light numbers. The actual lighting may not be placed next to the numbered plug... they are on long cables. Return your set plan to the Studio Manager 10 days prior to your scheduled day. (FYI... risers are 4 foot square)

Studio A Lighting Grid/Floor Plan:

